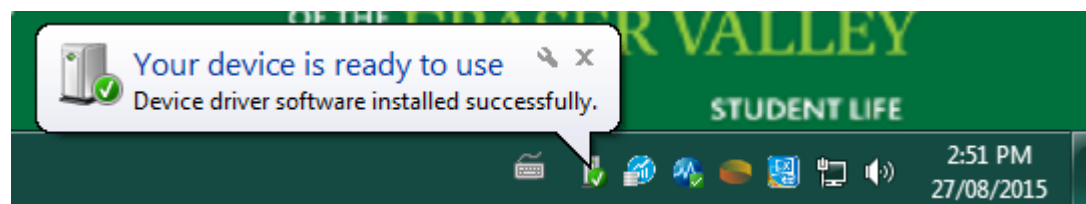
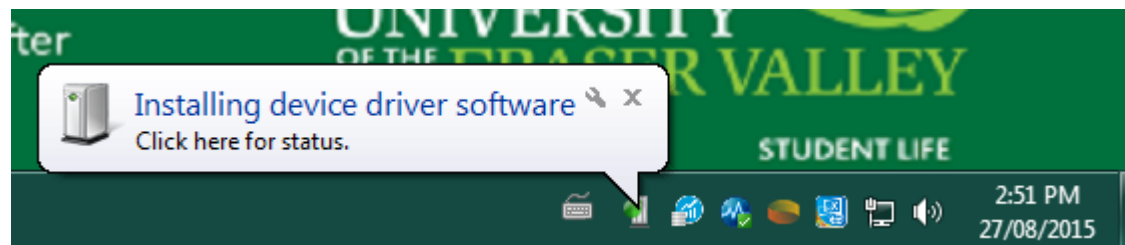


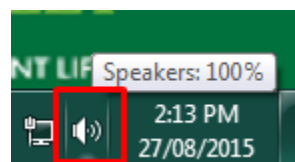
How to Set Up Yeti USB Microphone

NOTE: This tutorial also applies to other USB audio devices.

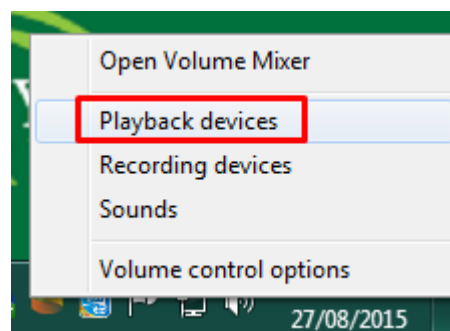
1] Wait until **“your device is ready to use”**



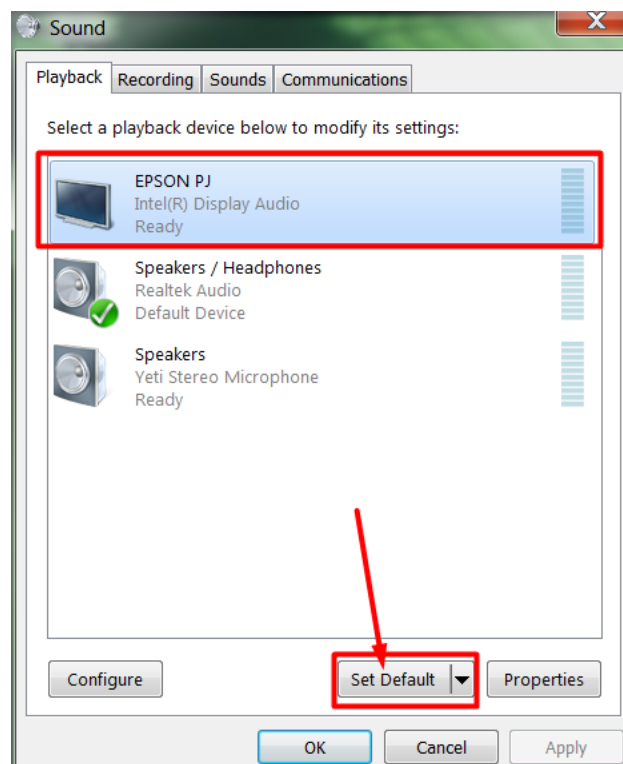
2] **Right-click** on the speaker icon



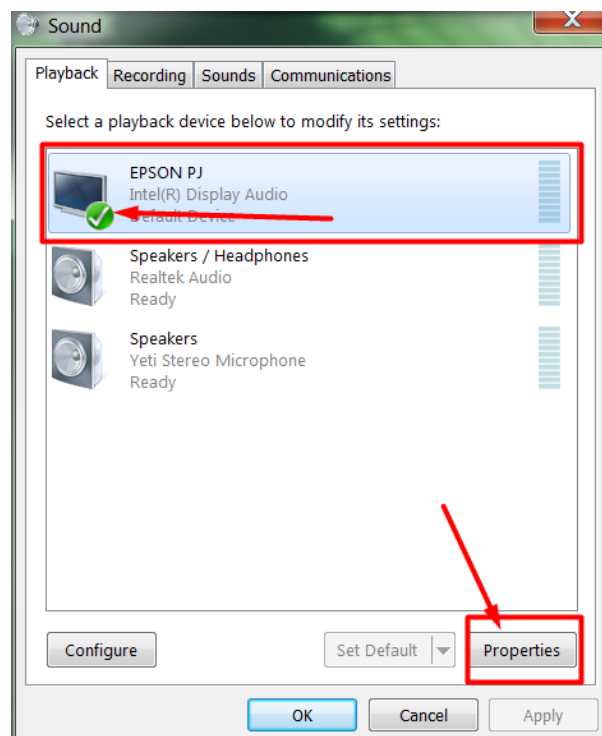
3] **Playback devices**



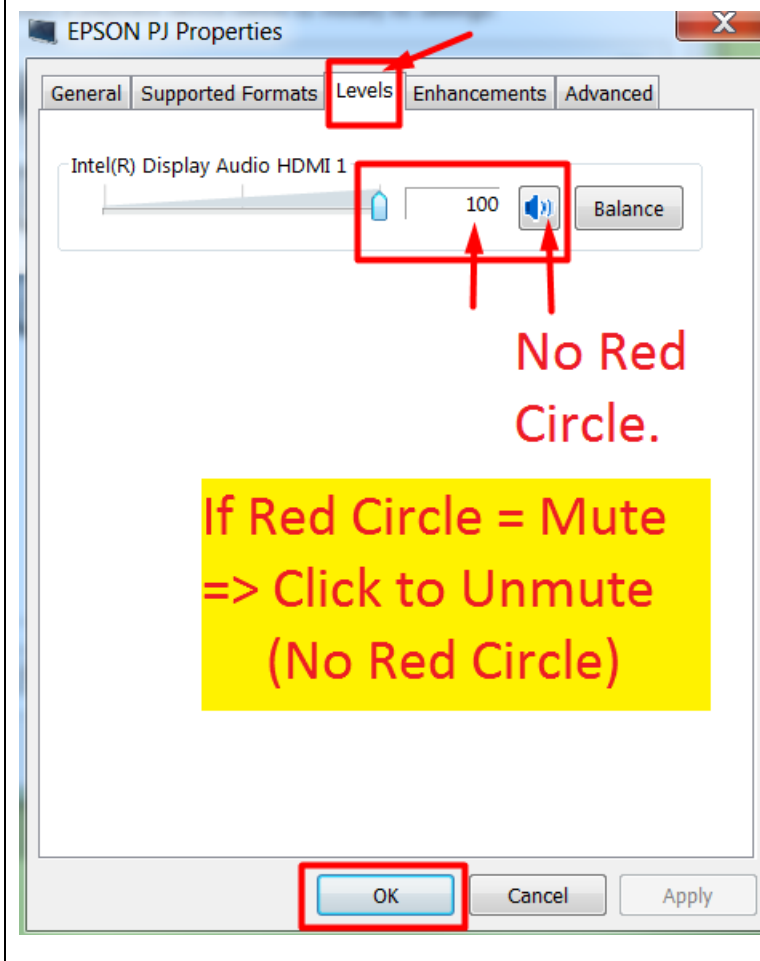
4] Click **your primary speaker** and then **Set Default**



5] Check if you have **only one green circle** next to your primary speaker. Click **Properties** for your primary speaker

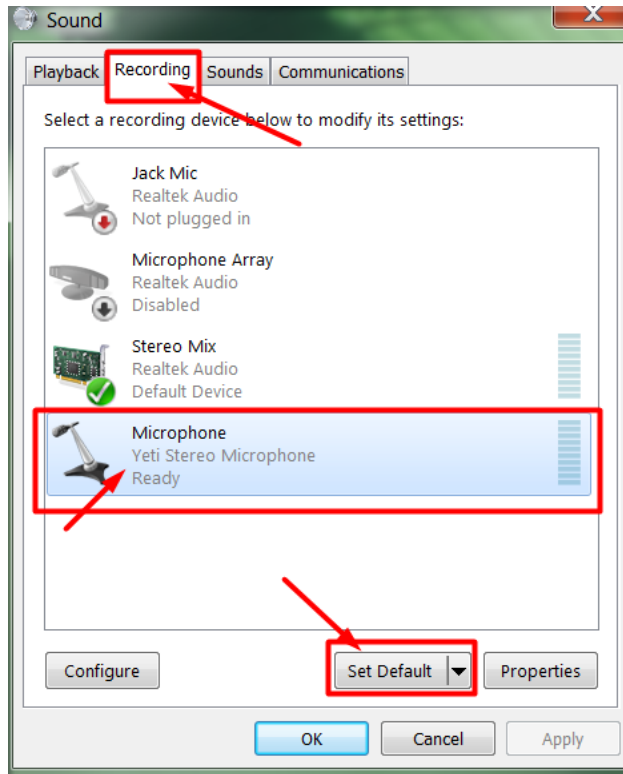


6] **Levels** > the volume bar to **100** & **no red circle** > **OK**

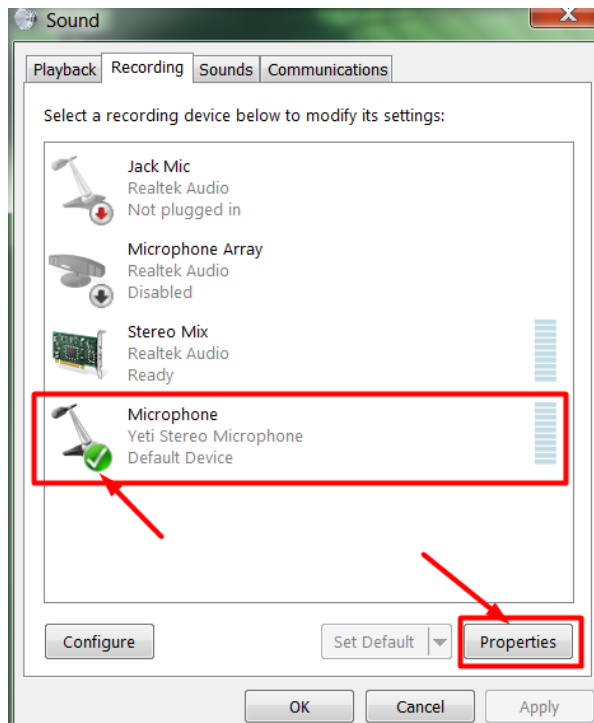


7] (next page)

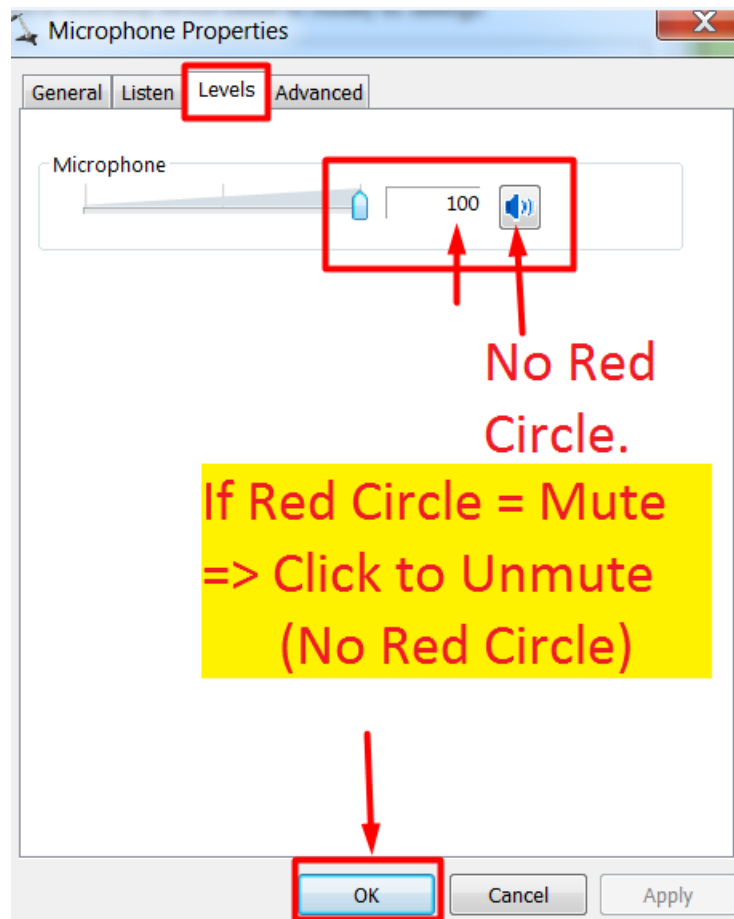
7] Click on **Recording** > **Yeti** > **Set Default**



8] Check if you have **only one green circle** next to Yeti.
Click **Properties** for Yeti



9] **Levels** > the volume bar to **100** & **no red circle** > **OK**



10] Yeti > **Front Side** > **Red Circle Button** (no blinking)

If **blinking** = **mute** > *Press, hold for 2 seconds and un-press it to unmute*
No blinking = **unmute**

11] Yeti > **Back Side** > **Gain (Middle)**

Middle (recommended). Test it out and choose the best setting for you.

12] (next page)

12] Yeti > **Back** Side > **Pattern** (Recording Mode)
> **OMNIDIRECTIONAL** (recommended)



1 STEREO



2 OMNIDIRECTIONAL



3 CARDIOID



4 BIDIRECTIONAL

STEREO: Uses both the left and right channels to capture a wide, realistic sound image—ideal for recording acoustic guitar or choir.

OMNIDIRECTIONAL: Picks up sound equally from all around the mic. It's best used in situations when you want to capture the ambience of “being there”—like recording a band's live performance, a multi-person podcast or a conference call.

CARDIOID: Perfect for podcasts, game streaming, vocal performances, voiceovers and instruments. Cardioid mode records sound sources that are directly in front of the microphone, delivering rich, full-bodied sound.

BIDIRECTIONAL: Records from both the front and rear of the microphone— good for recording a duet or a two-person interview.

13] In **each program** (Chrome, Firefox, Safari, Collaborate, Skype, Audacity, etc.), check if the **default microphone and speaker** are chosen correctly. If not, choose the default microphone and speaker in each program.

14] If you cannot get the microphone input in spite of all the correct settings, check if the USB cable is broken or its connection is loose.