


**Policing:**  
**A BC Practitioners' Toolkit**

**Lesson 3A:**  
**SARA Problem Solving Model**



1

---

---

---

---

---

---

---

---

**Review of Lesson 2**

**Problem-Oriented Policing**

- History
- Definition and concepts
- Strengths and benefits

2

---

---

---

---

---

---

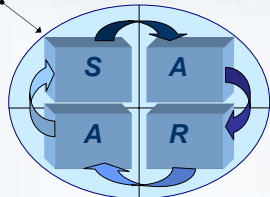
---

---

**Overview of Lesson 3**

**SARA Problem Solving Model**

- The four steps of SARA
- Importance of using all steps as a guide



3

---

---

---

---

---

---

---

---

## What is Problem-Oriented Policing?

A method for integrating daily police practice with criminal justice theory and research methods in order to develop the best possible means for reducing crime and disorder.

4

---

---

---

---

---

---

---

---

## Effective Problem Solving

Addresses community problems on the basis of:

- **understanding the specific problem**
- **customizing the response strategy**

This is achieved by:

- focusing **attention on problems**
- creating response strategies from a **variety of approaches.**

(R. V. Clarke & J. E. Eck, 2005)

5

---

---

---

---

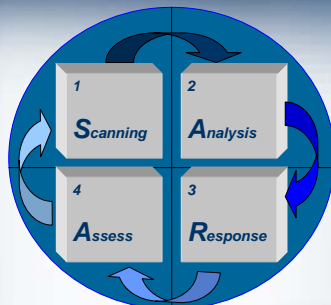
---

---

---

---

## SARA Problem Solving Model



Use as a guide, not a rule...

6

---

---

---

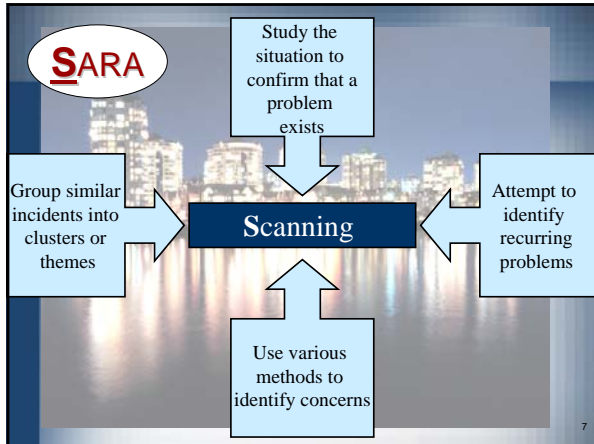
---

---

---

---

---




---



---



---



---



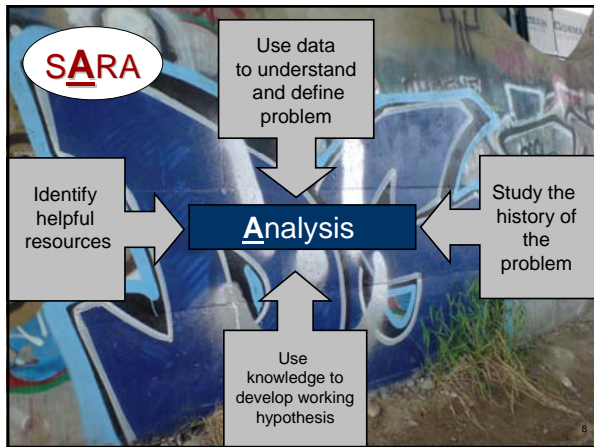
---



---



---




---



---



---



---



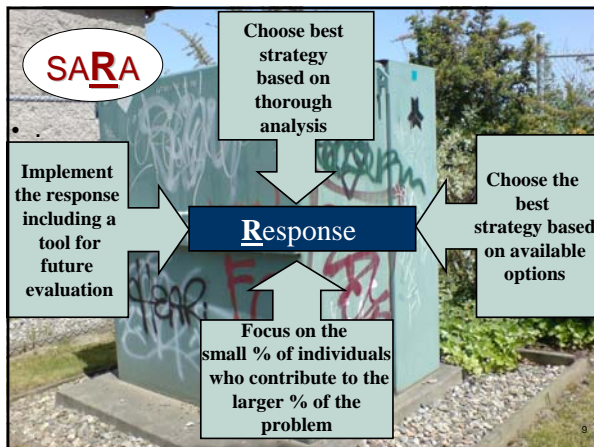
---



---



---




---



---



---



---



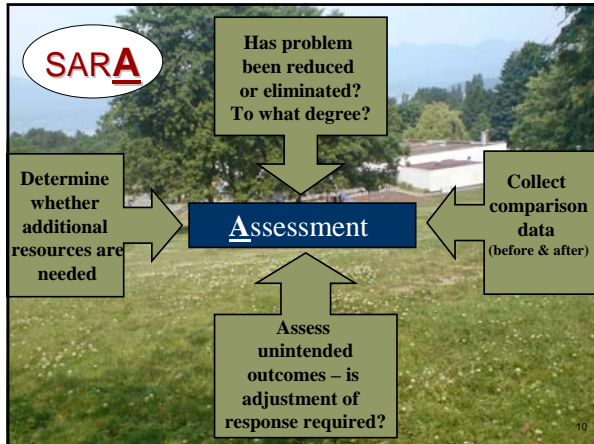
---



---



---




---

---

---

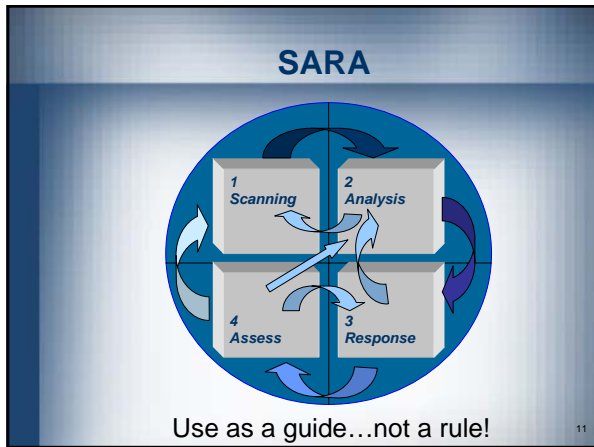
---

---

---

---

---




---

---

---

---

---

---

---

---

**Problem Solving is effective when...**

- a focused approach is used
- response strategies are customized
- all steps of the SARA problem solving model are implemented

---

---

---

---

---

---

---

---

## Next Lesson

### Lesson 4: Crime Prevention through Social Development (CPSD)

- What is CPSD?
- The relationship between crime and the social environment
- The police role in social development

13

---

---

---

---

---

---

---

---