



---

# Campus Planning

---

A Comprehensive Space Plan

**April 18, 2005**

Prepared by: Institutional Research & Planning

---

## Outline

1. Background of committee
  2. Space planning proposal
  3. Discussion of options
-

## How did we get to here?

\$6M request to Ministry for facility (classrooms & offices)	Denied request due to current utilization and future trades move	President and VPs went to Victoria to discuss request	Ministry audit of instructional space (Abbotsford, Marshall Road, Mission)	Ad Hoc Space Utilization Committee meeting to look at space needs and utilization	Abbotsford Campus space proposal
Sept 2004	Nov 2004	Jan 2005	Feb 2005	Feb/Mar 2005	Mar 2005

## Guiding Principles

### Purpose of Committee

To effectively and efficiently manage the utilization of space resources resulting in a high quality teaching, learning, and research environment for students, staff and faculty.

### Supporting Documentation

- AVED's Space Utilization Report
- UCFV Strategic Plan
- UCFV Multi Year Plan

## Ministry of Advanced Education – Space Utilization Report - Base Funded Activity(2003/04)

Instructional Space Utilization												
		Class/Labs						Shops/Teaching Kitchens				
Institution	Campus - Small(S) Medium(M) Large(L)	Total <sup>0)</sup> ASCH by Campus	<sup>0)</sup> ASCH for Class/Lab	<sup>0)</sup> Notional Class/Lab ST ST	ASCH/ ST ST	ASCH/ STST Space Standards	Utilization Rate	<sup>0)</sup> ASCH for Shop/Teaching Kitchen	<sup>0)</sup> Notional Shop/ Teach. Kitchen ST ST	ASCH/ ST ST	ASCH/ STST Space Standards	Utilization Rate
UCFV	Abbotsford (L)	2,418,616	2,291,315	2,562	894	1,000	89%	127,301	147	865	825	105%
UCFV	Abbotsford Marshall Rd (S)	21,505	21,505	261	82	650	13%				540	
UCFV	Challiwack (M)	624,504	624,504	1,131	552	750	74%	0	0		620	
UCFV	Hope (S)	12,441	12,441	85	146	650	23%	0	0		540	
UCFV	Mission (S)	129,195	129,195	334	386	650	59%	0	0		540	
<b>Institution Total</b>		<b>3,206,261</b>										
<b>Base Funded Activity May 2003 to August 2003</b>		<b>267,247</b>	<b>Summer Utilization Rate =</b>	<b>8.34%</b>	Summer Utilization Rate is a % of Year-round Activity			THE STANDARD FOR UTILIZATION (E.G. 1000 ASCH/ST ST) DOES NOT INCLUDE ADDITIONAL SUMMER UTILIZATION. FOR PLANNING PURPOSES ADDITIONAL SUMMER ACTIVITY IS A FACTOR IN DETERMINING SPACE NEEDS.				

## Ministry of Advanced Education Space Standards

Station Type	Definition	Area/ST ST (net m <sup>2</sup> )	Examples	Net m <sup>2</sup>	Total Student Stations
Seminar/Small Classroom	Up to 60 m <sup>2</sup>	2.50	D215	57.5	23.0
Mid-Sized Classroom	60 to 117m <sup>2</sup>	1.95	D115	76.5	39.2
<b>If D115 were to be made into lab space:</b>					
Fash Dsgn/Fine Arts	---	5.00	D115	76.5	15.3
Computer lab	---	3.40	D115	76.5	22.5
Physics lab	---	4.60	D115	76.5	16.6
Biology/Chemistry lab	---	6.00	D115	76.5	12.8

---

## **Long Term Rationale**

### **UCFV Strategic Plan**

#### **1.1 Improved academic support for students and faculty**

- 1.1.3 Develop the Library and Learning Centres as a primary location for student life activities, both individual and group, which centre on learning, study and research (a learning “commons”)
  - 1.3.2 Improve support services to aboriginal students and applicants
    - ARC expanded to include space on Abbotsford campus
- 

---

## **Long Term Rationale, continued**

### **UCFV Strategic Plan**

- 4.3 Formulate and implement development plan for each campus
    - 4.3.2 Work with the Province and local communities to resolve campus space problems
      - Alternatives to optimal space utilization and suitable facilities for program delivery
-

## **Long Term Rationale, continued**

### **Multi Year Plan (2004/05 to 2009/10)**

- Consideration of future growth needs with regards to space planning
    - Students
      - 1700 additional FTEs
    - Faculty
      - new hires
      - regularization
    - Research
      - Centres of Excellence
- 

### **Reasons behind the recommended renovations**

1. Increase the number of “bookable” classrooms
  2. Alleviate the office crunch (faculty & staff)
  3. Re-clustering of departmental offices
  4. Concentration of activity better suited to the Learning Centre ideal
  5. Minimize the amount of necessary renovations now and in the future
  6. Create more meeting room space
-

## Immediate Issues (2005/06)

### Program space needs

- Faculty and staff office space
- Classrooms
- Criminology/Criminal Justice
- Fashion Design
- Kinesiology
- Geography

## Faculty Office Space Needed

### 2005/06

- **New Hires**
  - 1 Criminology
  - 1 Mathematics
  - 1 History
  - 1 Kinesiology
  - 1 Business
  - 1 Biology
- **To be filled:**
  - 1 Business
  - 1 Chemistry
- **Regularization**
  - 7 faculty members

### NEED:

**2005/06** Approx. 10 new  
FTE faculty offices

**2006/07** Approx. 11 new  
FTE faculty Offices



# Criminology/Criminal Justice

□ **IMMEDIATE NEEDS:**

- Additional space for the Centre for Social Responsibility
- Three offices (1 new faculty hire (MA), 1 new admin hire (MA), Research Chair)

□ **RECOMMENDATION:** Renovation of Building A 2<sup>nd</sup> floor (Fashion Design space)

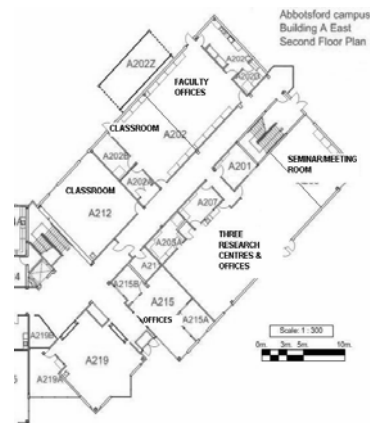
□ **IMPACT OF RENOVATION:** Movement of Fashion Design & Student Union Society.



# Criminology/Criminal Justice

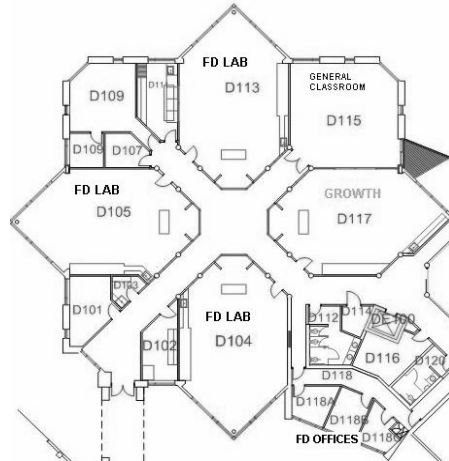
## RECOMMENDATION: Renovation of Building A 2<sup>nd</sup> floor

FTEs (est includes only Courses offered by Crim)				
	2004/05	2005/06	2006/07	2007/08
Crim Diploma	133	148	168	Growth Beyond 2006-07 is projected for Chwk
Crim Degree	61	61	66	Start with one Crim Dip cohort in 2007-08
Crim Masters	0	18	42	
2005/06 to 2008/09				
Space	Units	nsm/unit	nsm	
Faculty Office	16	9.3	167.7	
Safe School Ctr	1	45	45	
Social Resp Ctr	1	45	45	
Ctr for CJ Res.	1	46	46	
Class room	2	78	156	Capacity = 40
Seminar	1	60	60	Capacity = 24
Meeting room	1	49	49	Capacity = 16
			568.7	



## Impact of Renovation (Bldg A, 2<sup>nd</sup> Flr) Fashion Design

FTEs (est includes only Courses offered by Fashion Design)				
	2004/05	2005/06	2006-07	2007-08
Fash Design Dip	49	49	49	49
2005-06 to 2008-09				
Space	Units	nsm/unit	nsm	
Faculty Office	4	9.3	37.2	
Fash Des. Lab	3	125	375	Capacity = 25
Storage/ Change/ rooms	1	45	45	
			457.2	



## Impact of Renovation (Bldg A, 2<sup>nd</sup> Flr)

- SUS office (A215) → B230 (Assess Centre)
- Assessment Centre → G159 (Safe Schools)
  - Moved to the Learning Centre

# Kinesiology

- **IMMEDIATE NEEDS:**
  - Space for new lab
  - Three offices (new faculty hire, G. Anderson, .5 lab tech)
- **RECOMMENDATION:** Building D, first floor (closest to the gym, currently occupied by Geography)
- **IMPACT OF RENOVATION:** Geography (incorporated with the Geography request)

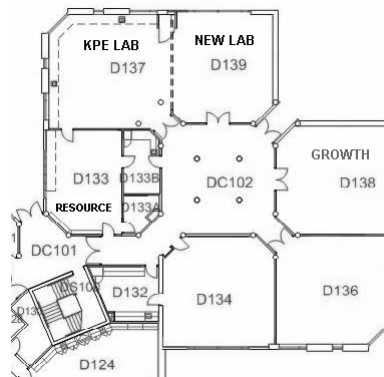


# Kinesiology

**RECOMMENDATION:** Building D, first floor (close to the gym entrance)

FTEs (est includes only Courses offered by KPE)				
	2004/05	2005/06	2006/07	2007/08
KPE Certificate	75	80	95	
KPE Degree	75	80	95	
2005/06 to 2008/09				
Space	Units	nsm/unit	nsm	
Faculty Office	10	9.3	93	
KPE Lab	2	82.8	165.6	Capacity = 18
KPE Prep Room	1	35	35	
Class room	1	78	78	Capacity = 40
			371.6	

(Assumes that 1 KPE Lab can also accommodate 'lecture' type classes)



# Geography

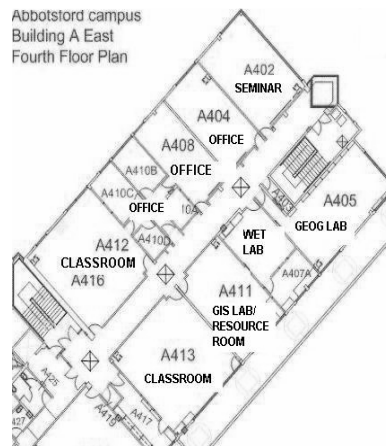
- **IMMEDIATE NEEDS:**
  - Space for new GIS lab
  - Space for Luminescence Dating lab
  
- **RECOMMENDATION:** Renovation of Building A 4th floor
  
- **IMPACT OF RENOVATION:** Library Tech, Social Work



# Geography

**RECOMMENDATION:** Renovation of Building A 4th floor

	2004/05	2005/06	2006/07	2007/08
<b>FTEs (est includes only Courses offered by Geography)</b>				
Lower Level	62	64	69	73
Upper Level	38	41	51	60
% of lower level Arts	14.0%	12	37	33
% of Upper level Arts	20.4%	16	51	42
<b>2005/06 to 2008/09</b>				
<b>Space</b>	<b>Units</b>	<b>nsm/unit</b>	<b>nsm</b>	
Faculty Office	10	9.3	93	
Wet/Water Lab	1	20	20	
Research Room/ Lab	1	50	50	
GIS/Seminar Room	1	85	85	
Class room	2	78	156	Capacity = 40
<b>Total</b>			<b>404</b>	



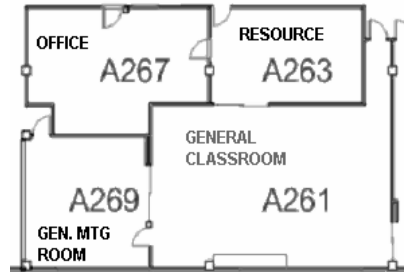
## Impact of Renovation (Bldg A, 4<sup>th</sup> Flr)

**RECOMMENDATION:** Library Tech to occupy Building A, 2<sup>nd</sup> floor, A261 (CCP)

- A261 (capacity of 46) provides a more appropriate classroom than A405 (capacity of 23) for Library Tech students (classes have a capacity of 30 or 36)

FTEs (est includes only Courses offered by Lib Tech)				
	2004/05	2005/06	2006/07	2007/08
Lib Tech Diploma	22.5	22.5	22.5	22.5
2005/06 to 2008/09				
Space	Units	nsm/unit	nsm	
Faculty Office	4	9.3	37.2	
LIBT Lab/Class	1	100	100	Capacity = 36
LIBT Prep/small comp room	1	35	35	
			172.2	

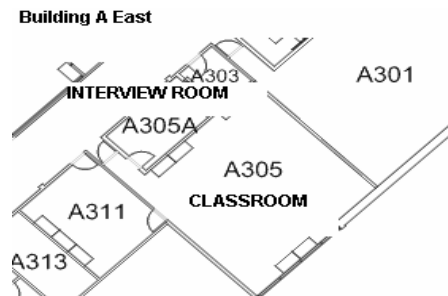
(Excludes online offerings associated with new era funding)



## Impact of Renovation (Bldg A, 4<sup>th</sup> Flr)

**RECOMMENDATION:** Social Work to occupy Building A, 3<sup>rd</sup> floor, A305

- Social Work A416 → A305

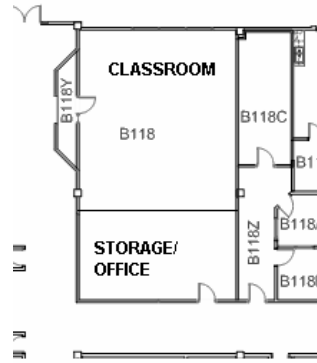




## Other Recommended Renovations

### ■ B118 (Old bookstore)

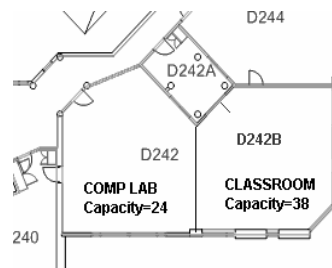
- Current capacity = 86
- Create one instructional classroom (capacity =40) and office/storage space (can be used by Sodexho instead of the Fishbowl)



## Other Recommended Renovations, continued

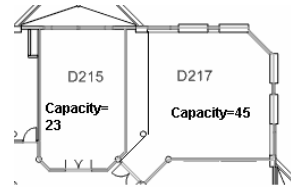
### ■ D242 (Large computer lab)

- Current capacity = 46
- Create one instructional classroom and one computer lab by dividing the room



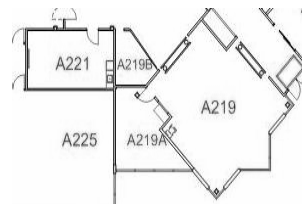
## Other Recommended Renovations, continued

- **D215** - Expand one wall to increase capacity



- **A221 & A219A - Expand Road Runner space**

- to accommodate the increase in traffic due to Criminology and Geography students



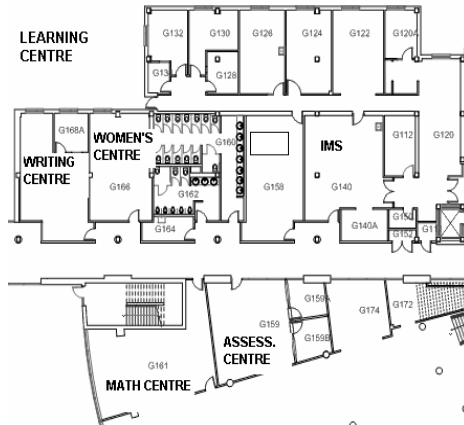
## Other Recommended Moves, continued Creation of a Learning Centre (Bldg G)

- **Employee Dev Centre** → **G180**
  - Very few courses are offered and most occur 3 – 4 weeks into a semester after the library has completed their orientations



## Creation of a Learning Centre (Bldg G)

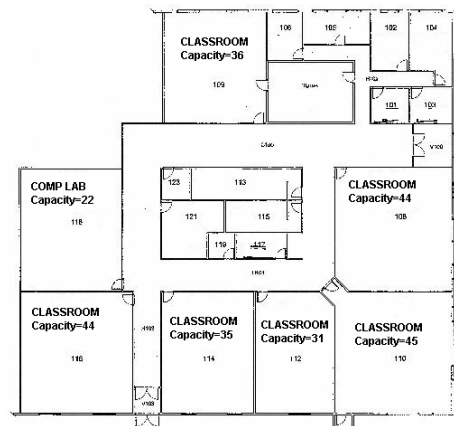
- G159 – Assessment Centre
- G161 – Math Centre
- G166 – Women's Centre
- G168 – Writing Centre



## Other Recommended Moves, continued

### Marshall Road

- 2003/04 – poorly utilized (Base funded activity = 13% utilization rate, Base & Non-base = 19%)
  - Movement of activity from Abbotsford
    - Electrical
    - Industrial First Aid



## Other Recommended Moves

- A360 - MCW → Move to another comp. lab
  - Remove computers and convert to classroom
- D204 – Industrial First Aid → Marshall Rd
- Aboriginal Resource Centre → Stud. Services
  - To facilitate the expansion of the Road Runner
- SUS office (A221) → B230 (Assess Centre)

## Re-allocated Instructional Space

1. A233 General Classroom (Capacity = 21)\*
2. A259 General Classroom (Capacity = 47)
3. A352 General Classroom (Capacity = 21)
4. A360 General Classroom (Capacity = 21)\*
5. A421 General Classroom (Capacity = 39)
6. B140 General Classroom (Capacity = 73)\*
7. D203 General Classroom (Capacity = 36)\*
8. D204 General Classroom (Capacity = 42)\*
9. D242B General Classroom (Capacity = 38)\*

\*New classrooms available as centrally booked spaces

## Other Issues

- Remaining dedicated space
  - Visual Arts Space
  - Psychology lab
  
- Cafeteria space
  - Ministry Standards allow for approximately double the size of current cafeteria space

Questions?

